

Maxseal Solenoid Operated Valves



ICO3S
1/4" 3/2
AUTO



- Typical Applications
- 1/4" 3/2 AUTOMATIC
- Actuator Control
- Direct Acting Shut Off Valve
- Oil & Gas Applications
- Turbine Fuel Control

Thompson Valves Ltd

- Description
- Model ICO3S 1/4" 3/2 UNI
- Direct Acting Solenoid Valve
- High Flow
- Max Inlet Pressure 10 bar (145 psi)
- A direct acting solenoid operated valve for the control of pneumatic or hydraulic operated equipment
- Reliable and long life, ideal for a one time installation
- ATEX, CSA, GOST K & R and IECEX

Standard Features

<input type="checkbox"/> Solenoid Materials of Construction	<input type="checkbox"/> Solenoid Pot - Stainless Steel - BFC 316
	<input type="checkbox"/> Top Cover - Stainless Steel - BFC 316
	<input type="checkbox"/> Valve Body & Trim Materials - 316 Stainless Steel
	<input type="checkbox"/> O-Rings & Seals - Nitrile (NBR)
	<input type="checkbox"/> Coil Insulation - Class H
<input type="checkbox"/> Maximum Inlet Pressure	<input type="checkbox"/> 10 bar (145 psi)
<input type="checkbox"/> Flow Rates	<input type="checkbox"/> $C_v = 0.6$ USgpm for 1 psi Δp
	<input type="checkbox"/> $K_v = 8.64$ l/min for 1 bar Δp
<input type="checkbox"/> Temperature Ratings	<input type="checkbox"/> Media (Min/Max -20°C/90°C) - Ambient (Min/Max -50°C/60°C)
<input type="checkbox"/> Valve Size	<input type="checkbox"/> 1/4" Poppet Valve
<input type="checkbox"/> Process Connections	<input type="checkbox"/> 1/4" NPT
<input type="checkbox"/> Conduit Connection	<input type="checkbox"/> M20 x 1.5 Conduit Thread
<input type="checkbox"/> Media	<input type="checkbox"/> Liquid & Gases
<input type="checkbox"/> Weight	<input type="checkbox"/> 2.5 kg


Recommended Spares Kits

<input type="checkbox"/> Soft Spares (O-rings, Springs, etc.)	<input type="checkbox"/> Standard	Y013A01H000-SS
	<input type="checkbox"/> Low Temperature valves	See Valve Data Sheet
<input type="checkbox"/> Spare Coil Assembly	<input type="checkbox"/> Standard 24V DC (3.0 Watts)	Y01300101B0
	<input type="checkbox"/> Other Variations	See Valve Data Sheet

Options

<input type="checkbox"/> Valve Body & Trim Materials	<input type="checkbox"/> Please call for details
<input type="checkbox"/> Low Temperature Options	<input type="checkbox"/> Please call for details
<input type="checkbox"/> High Temperature Options	<input type="checkbox"/> Please call for details
<input type="checkbox"/> Process Connections	<input type="checkbox"/> Thread 1/4" BSPP
<input type="checkbox"/> Conduit Connection	<input type="checkbox"/> 1/2" NPT
<input type="checkbox"/> Extreme Service	<input type="checkbox"/> Increased Power Consumption - Please call for details
<input type="checkbox"/> Product Lead Time	<input type="checkbox"/> Y013AA1H1BS - 1 week (subject to quantities)
	<input type="checkbox"/> Other variations: Please call for possible delivery dates

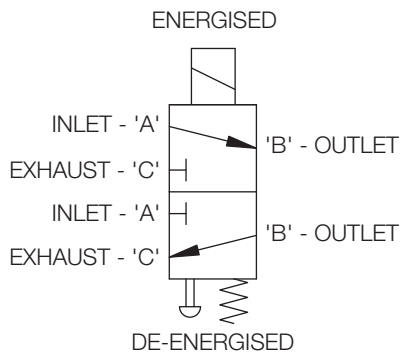
Technical Specification

Pressures	
Test (Proof) Pressure	<input type="checkbox"/> 15 bar (218 psi)
Maximum Inlet Pressure	<input type="checkbox"/> 10 bar (145 psi)
ATEX Classification	<input type="checkbox"/> Complies with ATEX Directive 94/9/EC
ATEX Certificate	<input type="checkbox"/> SIRA 00ATEX1156 and SIRA 05 ATEX 5284
Certification 	<input type="checkbox"/> II 2GD <input type="checkbox"/> Ex d IIC T6 (T _a = -60°C to + 50°C) or <input type="checkbox"/> Ex d IIC T4 (Max Ambient = + 90°C) <input type="checkbox"/> Ex mbe IIC T4 (T _a = -60°C to + 80°C)
IECEX Certificate	<input type="checkbox"/> IECEX SIR 05.0029 and IECEX SIR 05.0056
IECEX	<input type="checkbox"/> Ex d IIC T6 (T _a = -60°C to + 50°C) or <input type="checkbox"/> Ex d IIC T4 (Max Ambient = + 90°C)
GOST 'K'	<input type="checkbox"/> Ex d IIC T6 (T _a = -60°C to + 50°C)
GOST 'R'	<input type="checkbox"/> Ex d IIC T6 (T _a = -60°C to + 50°C)
Safety Integrity Level	<input type="checkbox"/> SIL 3 or SIL 4 (SIL 4 in redundant configuration only)
Ingress Protection	<input type="checkbox"/> IP66/X8 to BS EN 6052:1992, NEMA 4X
Voltage Surge Protection	<input type="checkbox"/> Surge Suppression Diodes
Coil Insulation	<input type="checkbox"/> Class H

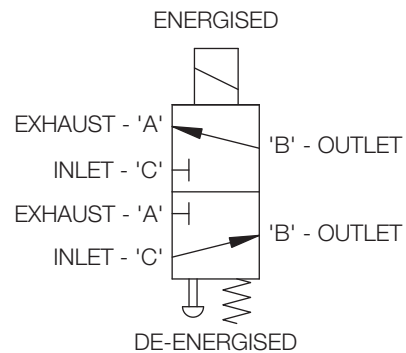
Performance

Pull-In Voltage	<input type="checkbox"/> 87.5% of Nominal
Response Times	<input type="checkbox"/> Pull-In <80 ms <input type="checkbox"/> Drop-Out <60 ms
Electromagnetic Compatibility (EMC)	<input type="checkbox"/> EN50081-1 EN50082-1 EN61000-4 parts 2,4,5

Valve Symbol



VALVE SYMBOL FOR
ENERGISE TO OPEN
(DE-ENERGISED TO CLOSE)
(NORMALLY CLOSED)



VALVE SYMBOL FOR
ENERGISE TO CLOSE
(DE-ENERGISED TO OPEN)
(NORMALLY OPEN)

Ordering Information

Model	Operating Pressure	Port Config.	Operation	Process Conn.	Seat/Seal Materials	Conduit Connection	Voltage	Body/Trim Materials
Y0	1	3	A	A1	H	1	B	S
Y0 ICO3S Ex d	0-10 barg (145 psi)	3/2 UNIVERSAL	Automatic	A1 1/4" NPT	H Nitrile	1 M20 x 1.5	B 24V DC	S 316 SS / 316 SS
YZ ICO3S Ex mbe				E1 1/4" BSPP	V Viton®	2 1/2" NPT	E 125V DC	

Ordering Example

YZ	1	3	A	E1	V	2	E	S
ICO3S Ex mbe	0-10 barg (145 psi)	3/2 UNI	AUTO	1/4" BSPP	Viton®	1/2" NPT	125V DC	316 SS / 316 SS

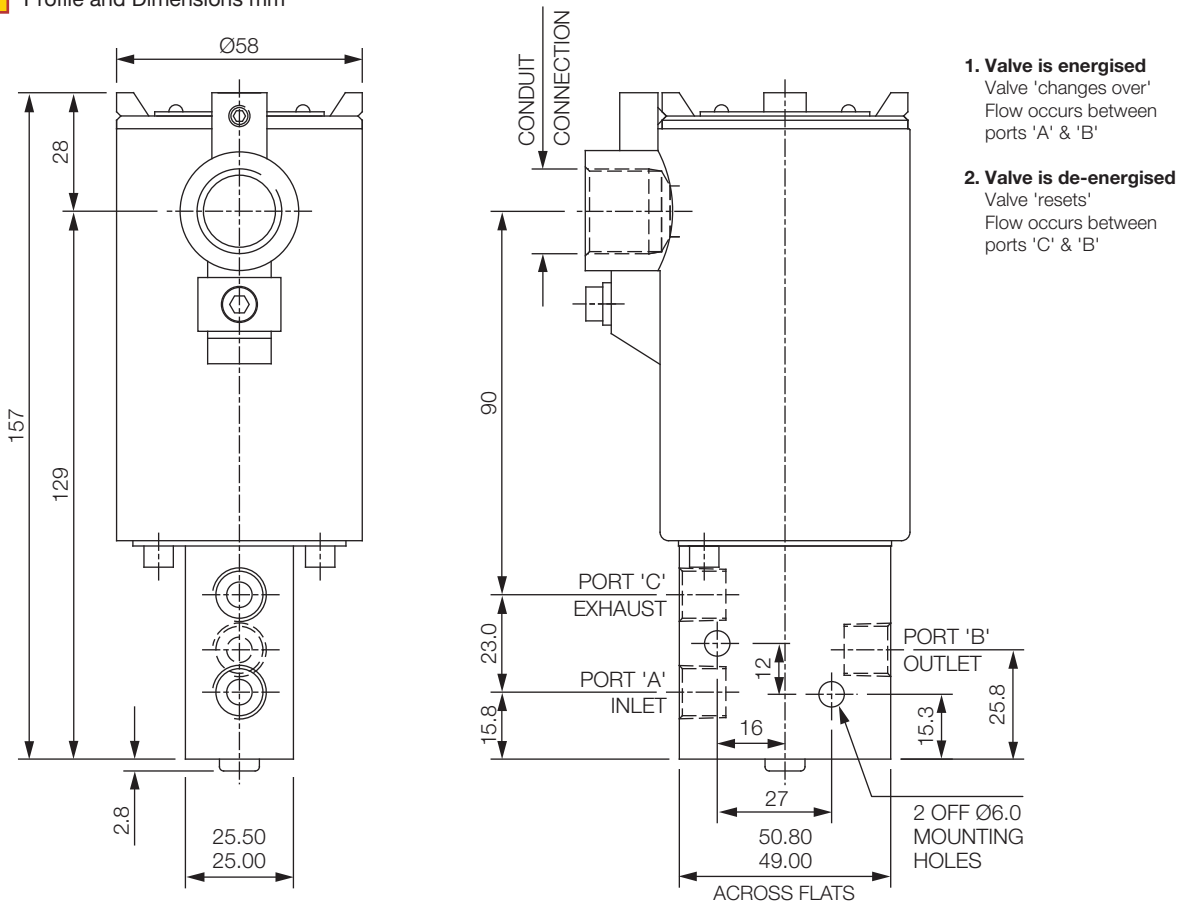
Power Consumption (At Nominal)

DC Standard	
24V DC	3.0W
125V DC	3.0W

AC Standard
Please Call for Information

Extreme Service
Please Call for Information

Profile and Dimensions mm



Thompson Valves reserves the right to amend product specifications or designs without notice. Information is given in good faith and no liability can be accepted for error or omission. Viton® is a registered trademark of DuPont Performance Elastomers.

Thompson Valves, 17 Balena Close, Creekmoor, Poole, Dorset BH17 7EF, ENGLAND
 Tel +44 (0)1202 647331 Fax +44 (0)1202 647302 Email maxseal@thompson-valves.com
 www.thompson-valves.com A fluid controls business of IMI plc